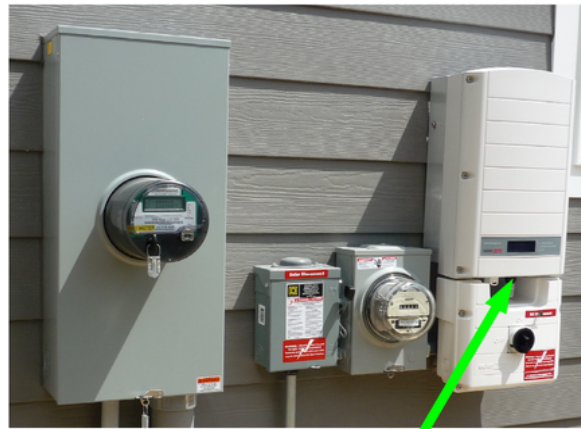
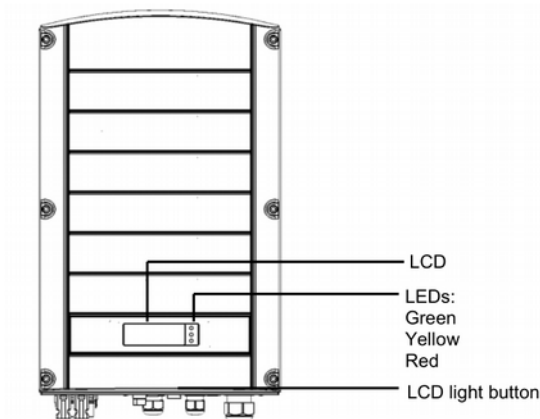


Reading SolarEdge Lifetime Production



Button located here

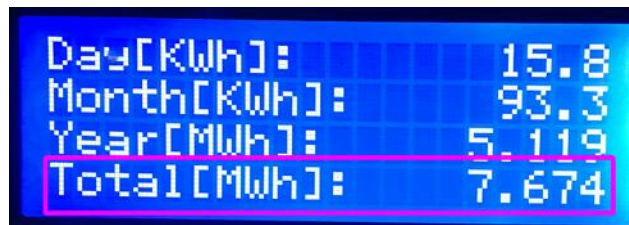
1. Locate the green "LCD Light" button on the bottom of the inverter:



2. Press it once to bring the screen to life, which will appear similar to this:



3. Press the button again to switch the screen to production readouts. The total is the lifetime production of that inverter:



If you have multiple inverters, repeat for each inverter and add the numbers together to obtain your combined production total.